

WWW.DHVI.NET



The Wellbore Analytics Provider



CaptureTM C³



DHVI's Caliper Camera Combo (C3) tool, enables us to provide the most innovative, industry leading, **Qualitative and Quantitative** analysis for wellbore inspections. The modular design of the C3 allows the operator to select from a 24 or 40 arm Caliper Temperature, Gamma Ray, CCL sensors to run in combination with the **Capture HD** camera for any wellbore parameter. The camera is logged on the way in and the caliper and sensors are activated to log on the way out of the wellbore minimizing the logging time and deployment costs.

- The **C3** is the ideal tool to log horizontal wellbores on coil tubing, tractors and pump-down applications.
- Innovation brings advances in the market and the **C3** has many:
- True **HD Colour Video** up to 30 Frames/second
- The smallest offset from the Downview to Sideview Cameras in the industry. Ideal for viewing sideview video of obstructions and for critical fishing operations
- Innovative **bi-directional motor** design eliminates rotational motor failures, allows the operator to pinpoint issues within the wellbore reducing time by always keeping the area of interest in sight.
- A newly designed shortened Caliper with 350°F /177°C temperature capability
- The ability to add on multiple logging sensors
- Live Data Transmission of the **HD Video and 3D Caliper Data** from the wellsite to anywhere in the world!

Specifications

Diameter	1 11/16 in	43 mm
Length	338 in	8.58 m
Pressure Rating	15,000 psi	105MPA (1034 bar)
Measurement Accuracy	0.02 in	~0.5 mm
Measurement Resolution	0.0039 in	0.1 mm
Caliper Measurement	1.77 - 9.625 in	45 - 245 mm
Typical Logging Speed	30 ft/min	9.14 m/min
Vertical Resolution	0.12 in	3.05 mm

Applications

- Mechanical/Corrosion Inspections in Tubulars
- Leak Detection & Fluid Entry Surveys
- Pre & Post Perforation Analytics
- Investigate & Identify Anomalies in a Port System

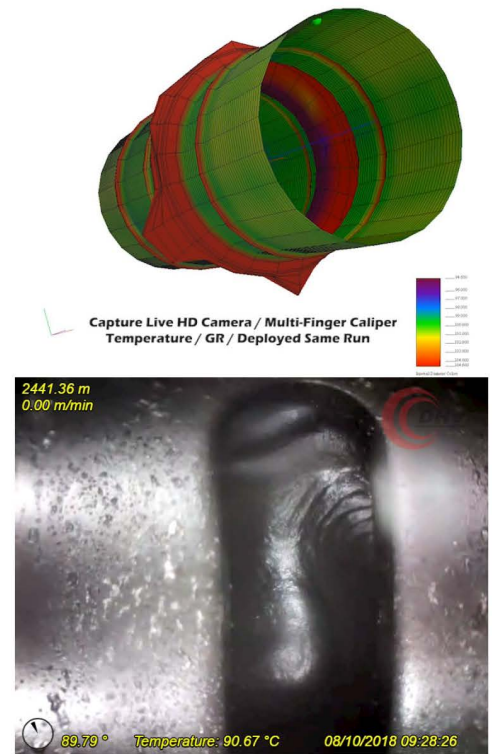
Contact our Experienced Team

Capture C³ Examples

WWW.DHVI.NET



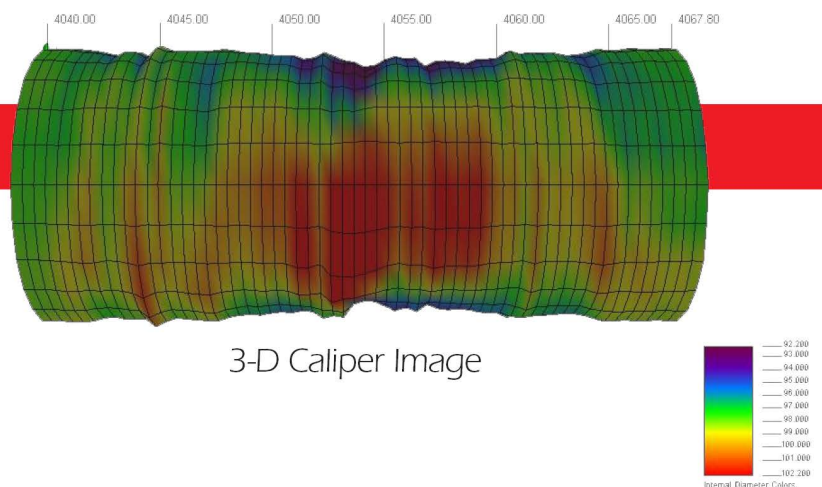
Opened Frac Port with Condensate Inflow



Eroded Formation



Mill Marks in Deformed Casing



3-D Caliper Image

1.855.565.3829

sales@dhvi.net



CaptureTM LIVE HD

CaptureTM Live HD Combines DHVI's Electric Line HD Colour Camera with the industry leading 24 arm Multi Finger Caliper and Production Logging Sensors.

This tried and tested wellbore solution offers a comprehensive qualitative and quantitative analysis of any wellbore condition. The modular tool design allows the customer to select the sensors required for the wellbore objective.



- **HD Colour Video** up to 30 frames per second.
- Industry leading minimal camera offset.
- New robust **bi-directional motor** design (motor will rotate when required under the harshest of wellbore conditions).
- New high temperature LED technology with innovative light diffusion, providing 4x the intensity of other technologies.
- Live streaming of video content anywhere in the world.

Specifications

Diameter	1 ^{11/16} in	43 mm
Length	10.8 ft	3.3 m
Pressure Rating	15,000 psi	105MPa (1034 bar)
Max Temperature	257° F	125° C
Camera Type	HD Side & Down View	
Connection	GO Connector	
NACE Rated material construction		

Applications

- Mechanical & Corrosion Inspections in Tubulars
- Leak Detection & Fluid Entry Surveys
- Inspection of Sand Screens & Slotted Liners
- Pre & Post Perforation Inspections
- REAL-TIME FISHING Assistance
- Gas Lift & SSSV Operational Inspection
- Horizontal Production / Fluid Hold-Up Analysis

Contact our Experienced Team

Mechanical Inspections

WWW.DHVI.NET



Collapsed/Milled/Split Casing



3-Phase Flow with Sand on Low side



Debris in Frac Port



Milled Tubing Fishtop



Cement in Casing Collar

Real Time Fishing Assistance!

1.855.565.3829

sales@dhvi.net



Capture™ MEMORY HD



Capture™ Memory HD combines the proven **CaptureLive** technology of the Electric Line Camera system with our on board slickline memory technology, resulting in the clearest, most vivid colours and video definition possible.

The **Capture™ Memory HD** system is fully well site programmable with minimal support equipment getting you logging quicker. Transportable on passenger aircraft due to the non hazardous battery operation allowing for faster deployment.

Higher Temperature variant available on request utilising our dewer flasking system.

Specifications

Diameter	1 ¹¹ / ₁₆ in	43 mm
Length	6.8 ft	2.1 m
Pressure Rating	15,000 psi	103.4 Mpa
Max Temperature	257° F	125° C
Camera Type	HD Down View	
Connection	SR Pin 15/16 in	
Recording Time	10 Hrs Continuous	
	24 Hrs Standby	
Battery Type	Alkaline	
NACE Rated material construction		

- **Full HD Video** up to **30 frames** per second.
- New high temperature LED technology with innovative light diffusion, providing 4x the intensity of other technologies.
- **Slickline** or **Coiled Tubing Conveyance**.
- **10hrs recording** with 24hrs standby.

Applications

- Mechanical Inspections such as:
Parted Tubulars / Corrosion / Restrictions
- Leak Detection & Fluid Entry Surveys
- Inspection Of Sand Screens & Slotted Liners
- Pre & Post Perforation Inspections
- Visual Identification for Wellbore Fish & Dropped Objects
- Gas Lift & SSSV Operational Inspection

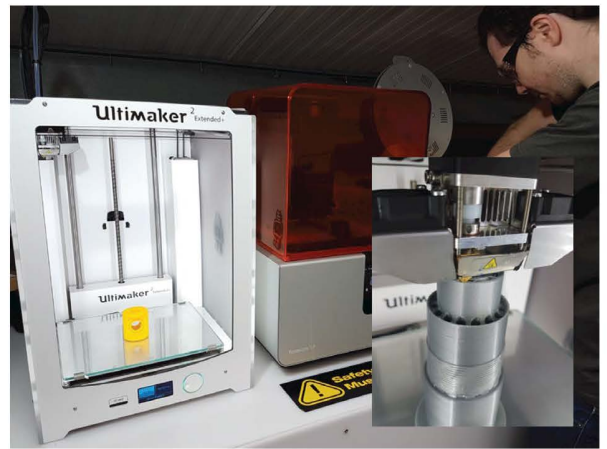
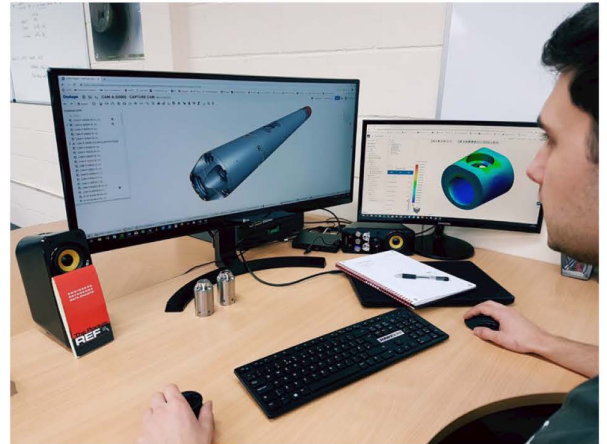
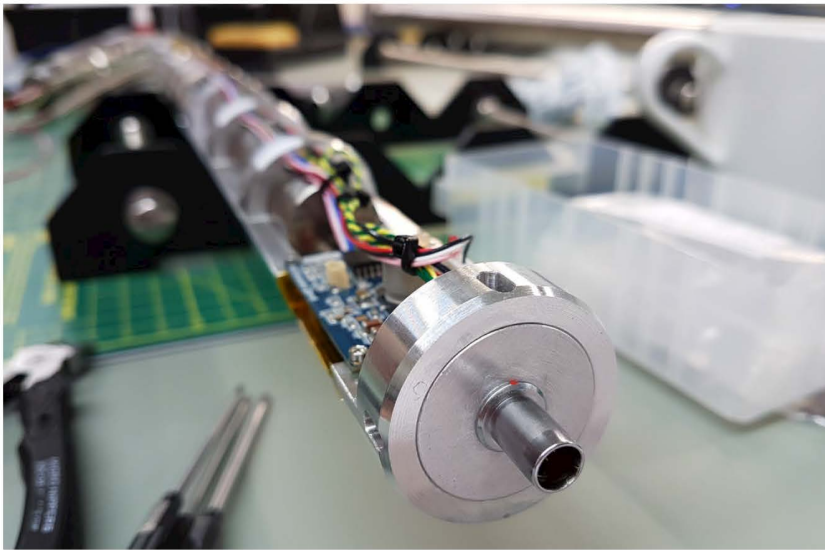
Contact our Experienced Team

Generating Solutions

WWW.DHVI.NET

- At **DHVI** we are proud to be able to offer a full multidisciplinary engineering capability from conception to manufacture.
- We design, manufacture, heat & pressure test all our wellbore equipment in house to our stringent standards ensuring the highest quality is achieved at all times.

We also have the capabilities to **design** and **manufacture custom solutions** to help you achieve your objectives.



Scope of Services

- Research & development utilizing the latest in 3D Printing and Finite Element Analysis.
- In-house software & firmware developers.
- One off bespoke solutions tailored to you.
- Global service & engineering presence.
- In-house pressure & oven testing.
- Multi skilled service engineers.

1.855.565.3829

sales@dhvi.net

WWW.DHVI.NET



WWW.DHVI.NET

Offices in the following locations:

CANADA

Head Office - Calgary, Alberta

Operations - Red Deer, Alberta

Operations - Grande Prairie, Alberta

Operations - St. Johns, Newfoundland

Tel: +01 587 747 0507

USA

Operations - Ardmore , Oklahoma

24HR Tel: +1-855-565-3829

Sales: 985-232-1238

UK

Norwich, North Sea Operations

Tel: +44 (0) 1603 891993

Email: sales@dhvi.net
or operations@dhvi.net