

The Platform for Unlocking Your Data's Value

PetroVault is the innovative wellsite data management platform from Petrolink. Throughout the entire data management lifecycle, it allows you to acquire real-time drilling data, augment it in place and perform analytics in the cloud, on-premise, and/or at the rig. An openly accessible ecosystem for integration and innovation, PetroVault enables you to securely access your data and build on top of it so you can develop and use best-in-class tools that work with our infrastructure.

PetroVault allows data collection and aggregation from any format from any service contractor, then puts that real-time drilling data under your control in a consistent structure.

Delivering a Full Suite of Advantages

This system represents a significant step-change providing you with a smarter, more accessible environment that is open to your technology.

Designed to maximize interoperability,

PetroVault allows you to easily add and integrate your software, and even use third-party applications.

Features:

- PetroVault offers a single digital platform for all data produced across the technology spectrum.
- Extended database support for relational databases – PostgreSQL and MS SQL.
- For increased throughput PetroVault now supports running time series data in Cassandra.
- WITSML data can be ingested in real-time in WITSML 1.3.1.1, 1.4.1.1, 2.0 schema transferred over WITSML SOAP or ETP 1.1 Web Service. The data in PetroVault can be accessed through various Petrolink apps such as PetroVue RTV / Data Studio, 3rd party WITSML, or ETP clients.
- Documents can be managed using various Petrolink apps such as PetroVue Digital Well File or simply synced via SFTP, using FileSync, Filezilla or IPswitch or any applicable FTP clients.
- Users and user groups can be created manually using Petrolink's IDM system, be mapped to the client's internal active directory, or even be integrated to cloud based IAM (Identity and Access Management) systems like Azure AD or OKTA. Petrolink's API facilitates additional query mechanisms and permissions on resources.
- Replication services can be enabled to ensure redundancy for immediate failover.



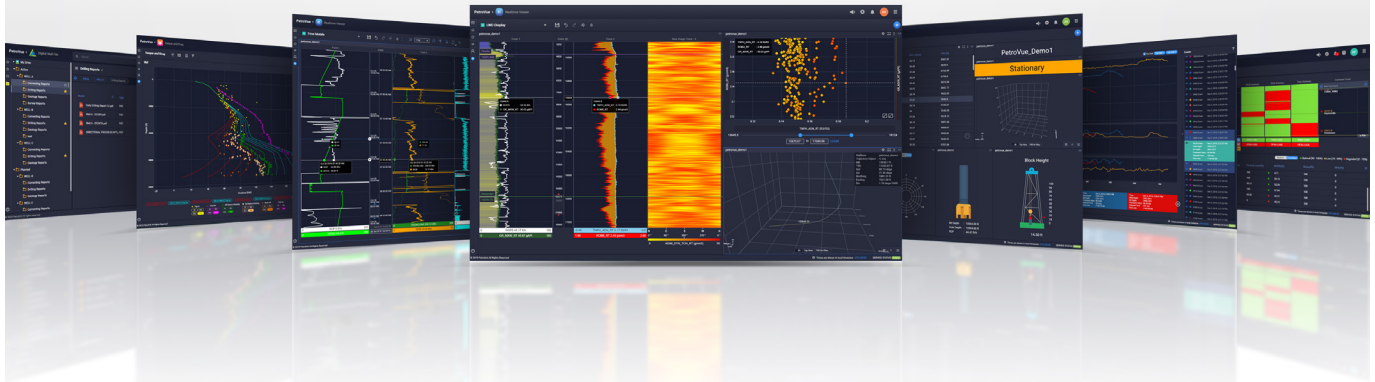
Benefits for You:

- Designed to manage many data sources received from multiple rigs using different well service providers, the PetroVault storage and PetroVue RTV visualization platform means your data is under your control in the format you require.
- PetroVault fulfils the E&P industry need to have public domain standards that facilitate the free flow of streaming data across vendor networks. Every operator requires a synthesized corporate database that collates historical well data, streams real-time data, reports, and memory data files. PetroVault delivers that all in one place.
- PetroVault provides storage, which is fully WITSML and ETP compliant, making it compatible with any visualization/analytics tools of the operator's choice. It is an always-on, fully scalable, fault-tolerant system that caters to all your data management needs from ingestion and storage through to archiving.
- PetroVault provides a stable system for tools which are dependent on PetroVault as a data and identity store. Applications that store their resources in PetroVault Data Store enjoy the full benefit of using permissions, replication, and auditing capabilities.

Choose the Option That's Best for You

Available for lease or sale, PetroVault improves productivity, enhances efficiency, and increases yield by providing a smarter, accessible real-time drilling data monitoring environment that is open to your technologies.

Discover the platform designed to improve productivity, enhance efficiency and increase yield from acquisition to archive.



Contact Petrolink today for a quote or demo

sales@petrolink.com